

C-76-57

Robert Hughey

B-10-198

Hugh Thomson

Michael Graham

A-84-62

Hugh Thomson

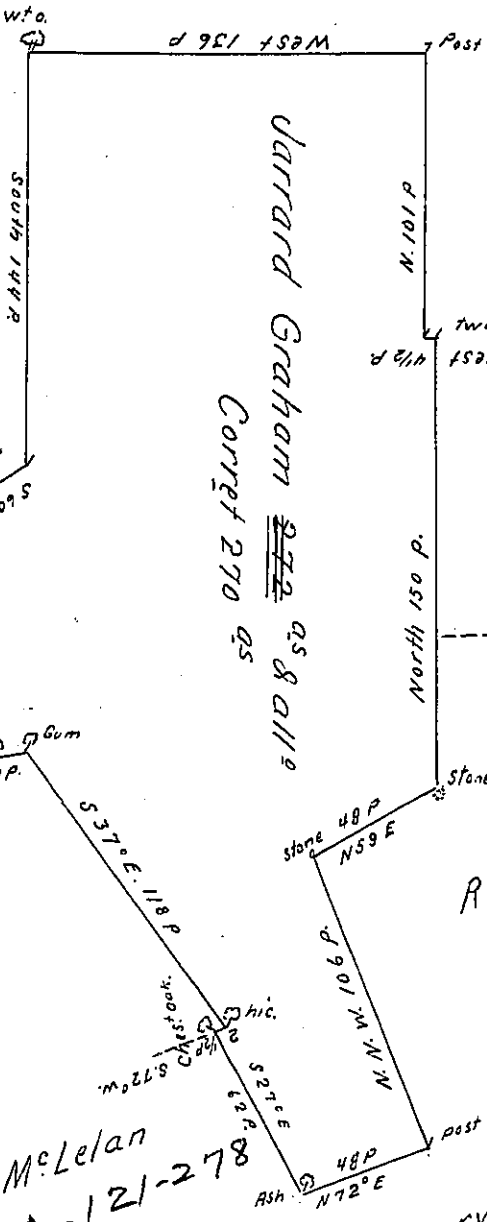
Robert Lusk

C-105-221

Hugh McLelan

C-121-278

Henry Thomson



Pursuant to a Warrant Dated the 15<sup>th</sup> of February A.D. 1748. The above Described Tract of Land was Surveyed To Jarrard Graham in ye Township of Salsbury Lancaster County. Begining at a Post Thence by the Land of Hugh Thomson S. 60° W. 38 p. to a W<sup>t</sup> Oak And S. 15° E. 80 p. to a Span. Oak & N. 75° E. 10 p. to a Gum S. 37° E. 118 p. to a Chic. And S. 72° W. 2 1/2 p. to a Chesnut Oak Thence S. 27° E. by ye Land of Hugh M<sup>c</sup>Lelan 62 p. to an Ash &c. Cont<sup>d</sup> 272<sup>as</sup> & ye All<sup>o</sup> of 6 p. Cent.

19<sup>th</sup> 3<sup>m</sup> 1749 Sur<sup>d</sup> p.

Sam<sup>l</sup> Lightfoot.

IN TESTIMONY that the above is a copy of the original remaining on file in the Department of Internal Affairs of Pennsylvania, made conformably to an Act of Assembly approved the 16th day of February, 1833, I have hereunto set my Hand and caused the Seal of said Department to be affixed at Harrisburg, this third day of October 1904.

*Isaac R. Brown*  
Secretary of Internal Affairs.